

NUOU



AZIMUT 55 FLYBRIDGE 59 ft. | 12 

Elegance & Comfort

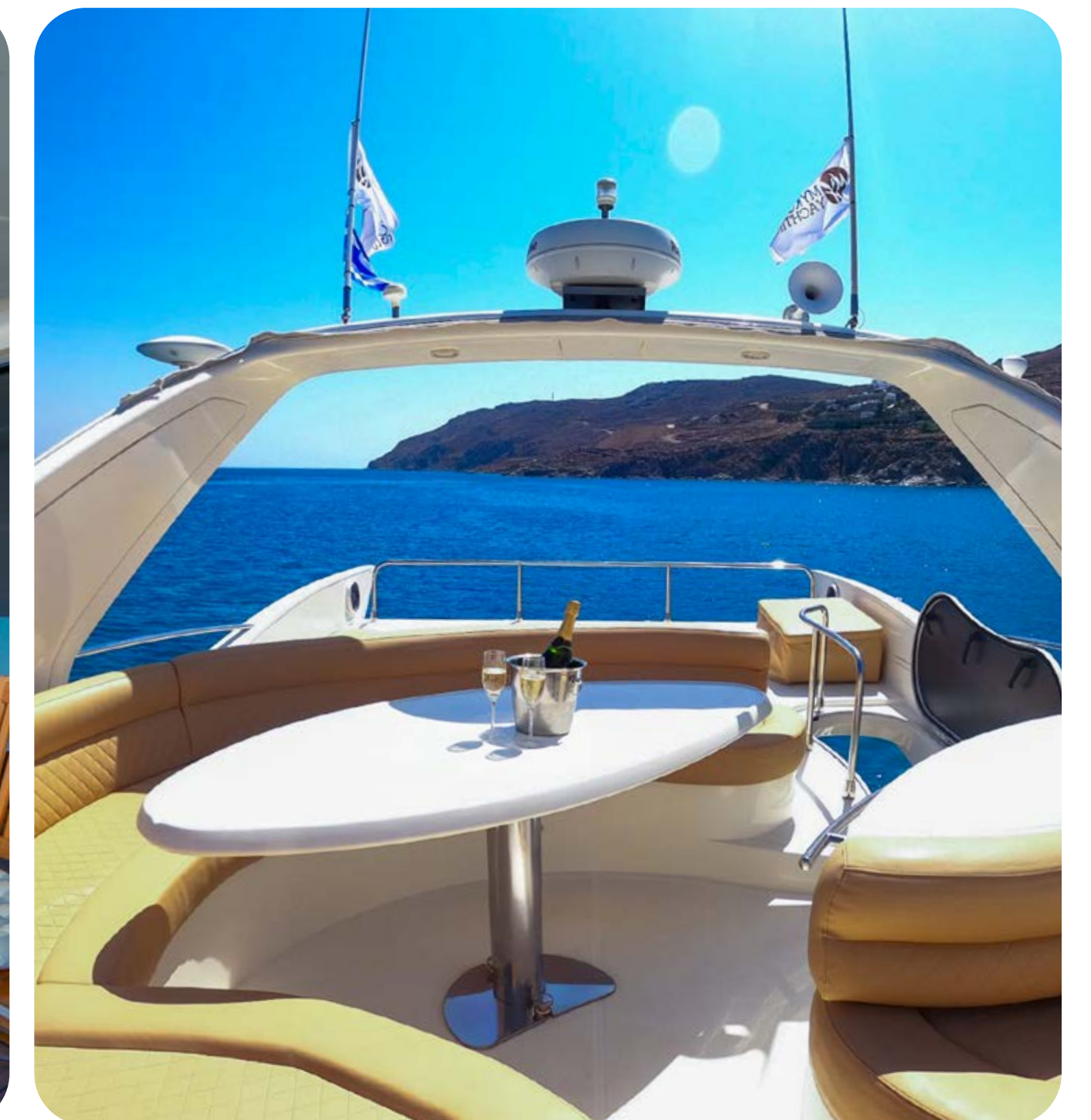
Step aboard **Njoy**, an Azimut 55 Flybridge designed to set the standard for elegance and comfort. Sleek, contemporary lines blend with cutting-edge technology to create bright, open spaces, offering privacy, style, and the ultimate yachting experience.



AZIMUT 55 FLYBRIDGE

Open-Air Luxury

With one of the largest flybridges in her class, **Njoy** delivers an unparalleled open-air experience. Sunbeds on the foredeck and a spacious flybridge dining area provide ideal settings for relaxation, socializing, and entertaining, all while enjoying breathtaking sea views.



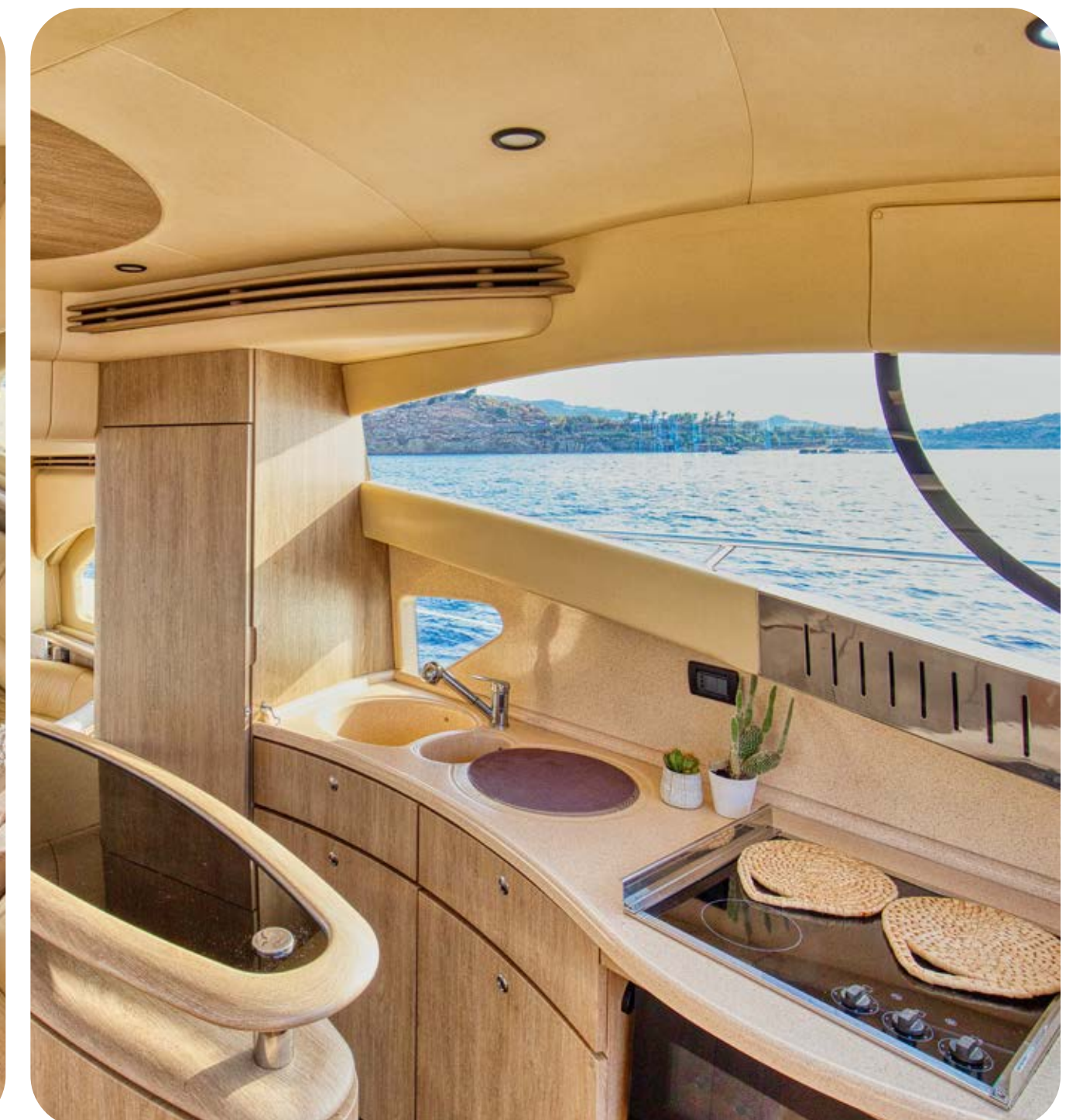
AZIMUT 55 FLYBRIDGE

Sophisticated Interior Design

Step aboard and enter a luxurious salon with large windows and sleek modern surfaces. Smart design creates a spacious, inviting environment for relaxation and socializing, with uninterrupted views from cockpit to helm. The split-level deck salon adds style and serenity, making it the perfect setting for entertaining or simply enjoying the sea in comfort.

Njoy features elegantly designed cabins: a queen-sized master, a double-bed VIP, and a guest stateroom with two singles—private, stylish spaces for ultimate comfort.

AZIMUT 55 FLYBRIDGE



MASTER STATEROOM

AZIMUT 55 FLYBRIDGE



VIP STATEROOM

AZIMUT 55 FLYBRIDGE



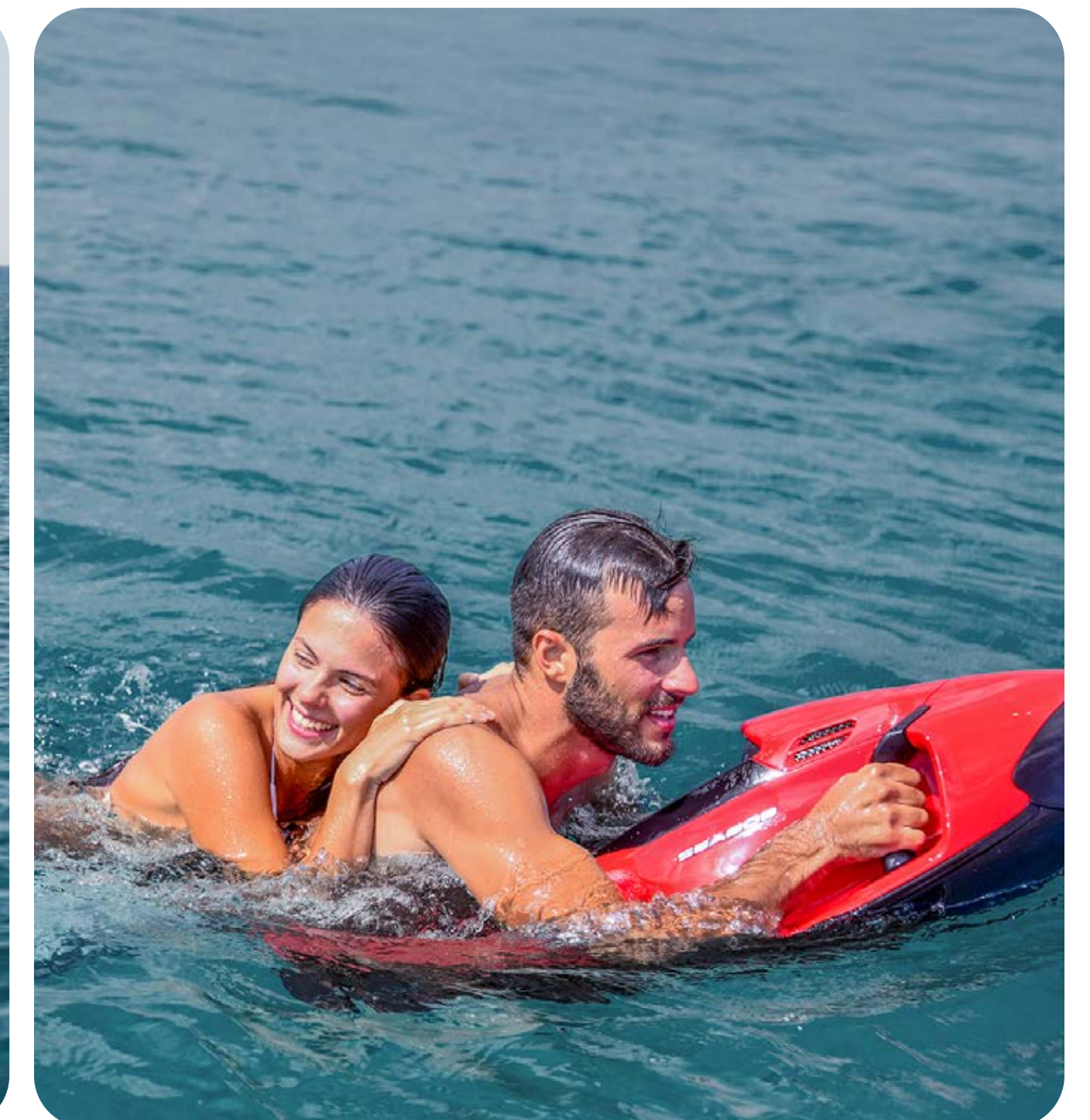
GUESTS STATEROOM

AZIMUT 55 FLYBRIDGE



Water Toys & Adventure

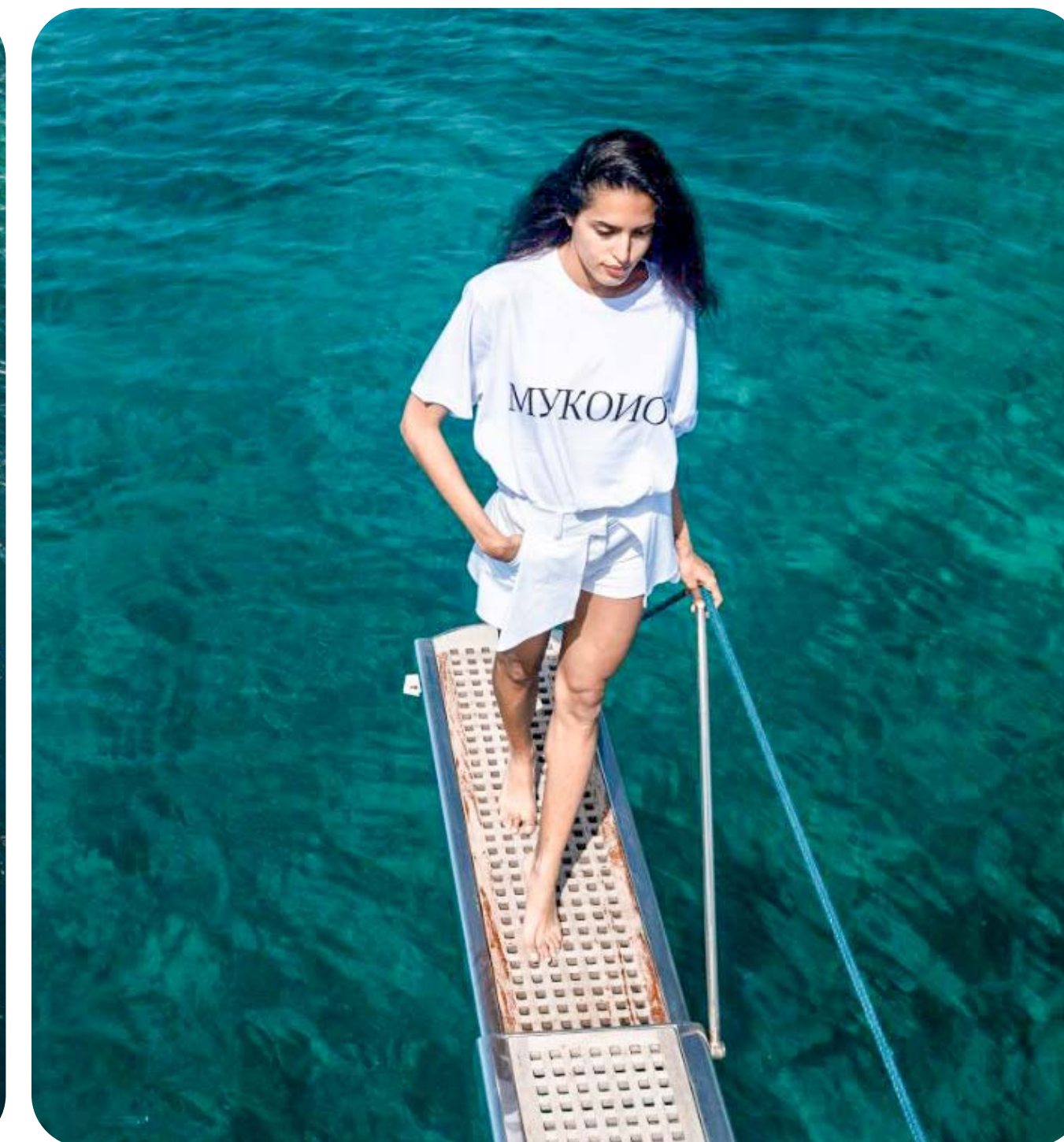
Adventure awaits on the water with **Njoy**, offering a selection of water toys, from a Seabob (on request) to snorkeling gear and fishing equipment, letting guests fully experience the crystal-clear Aegean seas.



AZIMUT 55 FLYBRIDGE

NJOY

combines performance, style, and comfort—ideal for those seeking an intimate, luxurious yachting experience.



AZIMUT 55 FLYBRIDGE

SPECIFICATIONS / FEATURES

KEY FEATURES:

Builder: Azimut Yachts (Italy)

Model: Azimut 55 Flybridge

Yacht 's Name: NJOY

Year of Built: 2005

Year of last refit: 2025 -2026

Max. Cruising Capacity: 12 pax

Max. Sleeping Capacity: 6 pax

Crew: 2 (captain & steward)

Length overall (incl. pulpit): 59 ft. / 17.98 m.

Beam at main section: 15.81 ft. / 4.82 m.

Draft (incl. props at full load): 5 ft. / 1.52 m.

Displacement (at full load): 22 t.

Engines: 2 x 660 HP Caterpillar

Cruising speed: 27 knots

Maximum speed: 33 knots

Fuel capacity: 2.230 L

Water capacity: 700 L

Water maker: 120 lt./hour

Generator & 220 V Electricity

Power inverter

Fully equipped navigation instruments, Radar, Auto-pilot

Full A/C system

ACCOMMODATION

1 Master Stateroom with queen size bed

1 VIP Stateroom with double bed

1 Guests Stateroom with two single beds

2 Bathrooms / WC

1 Crew Stateroom

1 Crew Bathroom / WC

GALLEY

Combination microwave / conventional oven / grill / BBQ

2 Fridges (Galley & Rear deck)

1 Freezer

ENTERTAINMENT EQUIPMENT

2 Flat TV displays (42", 32")

Sound system Radio / CD / USB, subwoofer

Flybridge sound system

Wireless music control from your Smartphone or Apple device

Free Wi-Fi

TENDERS AND WATER TOYS

Snorkeling equipment

Fishing Equipment

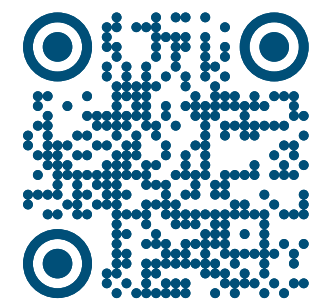
Seabob (optional)

Paddleboards (optional)

Tender or Jet Ski (optional)

contact us

T: +30 22890 28660
M: +30 699 242 4242
E: reservations@mykonosyachting.gr
www.mykonosyachting.gr



AZIMUT 55 FLYBRIDGE

